



**presents**

# **RAGING ROOSTER TWILIGHT CRITERIUM**

**Date**

Sunday, July 13, 2025

**Location**

Birchwood Auto Park – Winnipeg


## Overview


Bicycle racing. At an automotive venue. At night. Dark Red Racing returns to its roots.

- Start/Finish: Nick Laping Way (near Birchwood Kia)
- Race venue address: Birchwood Auto Park - 3965 Portage Ave., Winnipeg
- Parking: Hockey For All Centre
- Lap Distance: .9 km
- License Required: Valid Manitoba or UCI Racing License


## Organizers

Chris Huebner

 (204) 396-2900

 [ckhuebner@gmail.com](mailto:ckhuebner@gmail.com)

Charlene Guenter

 (204) 999-2310

 [charlene.guenter@gmail.com](mailto:charlene.guenter@gmail.com)

## Parking & Facilities

Parking: Hockey For All Centre (Google Pin – [Link](#)).

To access the race course from the parking lot: there is a gate that allows you to pass from the Hockey For All Centre parking lot to the Birchwood Toyota lot. The gate is located at the traffic circle in the Hockey For All Centre parking lot (see gate location [here](#)).

Washrooms: a portable toilet will be located by the gate between Birchwood Toyota and the Hockey For All Centre.

## Eligibility

Open to all holders of a valid UCI/CCA Race License or “Manitoba” Race License.

## Registration

Format: Online registration via Zone4 (until July 11); race day registration (closes at 7PM)

Online Registration Link: [Zone4](#)

Fee: Adults \$30; 17 years and under \$20. Race day registration: \$40

Online Registration closes July 11 at 11:59 p.m.

Each racer must sign in at race headquarters, present their license and race numbers. Sign in opens at 6pm and closes 30 minutes prior to your race.

### Race Day Sign-In

Location: Race HQ at the start/finish line on Nick Laping Way near Birchwood Chrysler Dodge Fiat Jeep Ram.

### Race Schedule \*(subject to change based on participation)\*

Category	Duration	Start Time
Cat 5	20 min + 2 laps	7:30 p.m.
Cat 4	30 min + 2 laps	8:15 p.m.
Cat 1/2/3	40 min + 2 laps	9:00 p.m.

### Assembly

Riders must assemble on in the parking lot by the Race HQ 15 minutes before their start time.

### Race Numbers

Use numbers issued for the 2025 season. Numbers must be pinned on the right side of the jersey. Use the number assigned at your first race of the season. If this is your first race in 2025, a number will be provided.

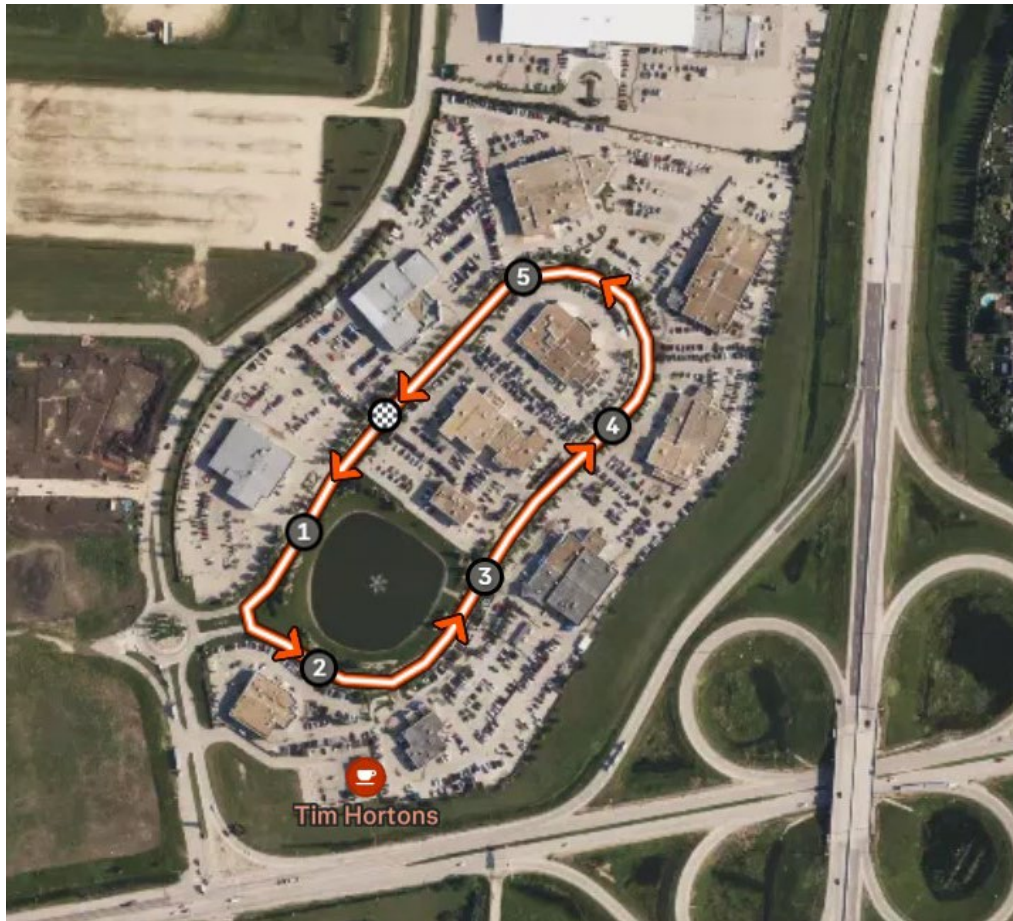
### Number Placement

Use this link for number pinning instructions, [Number pinning link](#).

### Prizes

Podiums and prizing after the final event (~10:00 PM). Prime laps (mini-race for a cash prize) will be announced during the event.

## Course Map



## Race Rules

- The course will be closed to all vehicles.
- The course will be open for pre-riding from 6:00 PM to 7:15. There will be additional time for a lap or two between races.
- Ride within the designated route. Ensure you ride safely, in control. Cyclists deemed to be riding unsafely, discourteously, or recklessly will be removed.
- Be aware of others around you and communicate well in advance while cycling. Ride with your head up.
- Know your limits. Crashes can occur when inexperienced riders lack the bike handling skills necessary to make quick decisions in a pack.
- Never overlap your wheels with another cyclist.
- The use of aerobars and riding in the aero-position is prohibited.
- Do not use headphones, personal stereos, or cell phones while riding.
- No outside support vehicles allowed along the course.

- Emergency vehicles ALWAYS have the right of way. Riders must give way to emergency vehicles by pulling over, stopping, and dismounting if necessary.
- Always display your RACE number. All registered cyclists must wear their RACE number according to race instructions. Riders who fail to do so will not receive an official finish time.
- All riders must obey traffic officers and course marshals. Disobeying instructions from these individuals will result in disqualification from the ride.
- No littering on course. Riders must dispose of garbage in designated bins only. Riders caught littering will be disqualified from the event.
- There will NOT be follow vehicles for each category.
- Each event participant is responsible for their own flat changes or mechanical mishaps on course. There will not be a Neutral Service Vehicle for this event.
- No personal, team, or club follow vehicles are allowed on the race course.
- No e-bikes are permitted
- Only drop bar bikes, with working front and rear brakes are permitted
- No sleeveless jerseys
- Riders must wear closed toe shoes