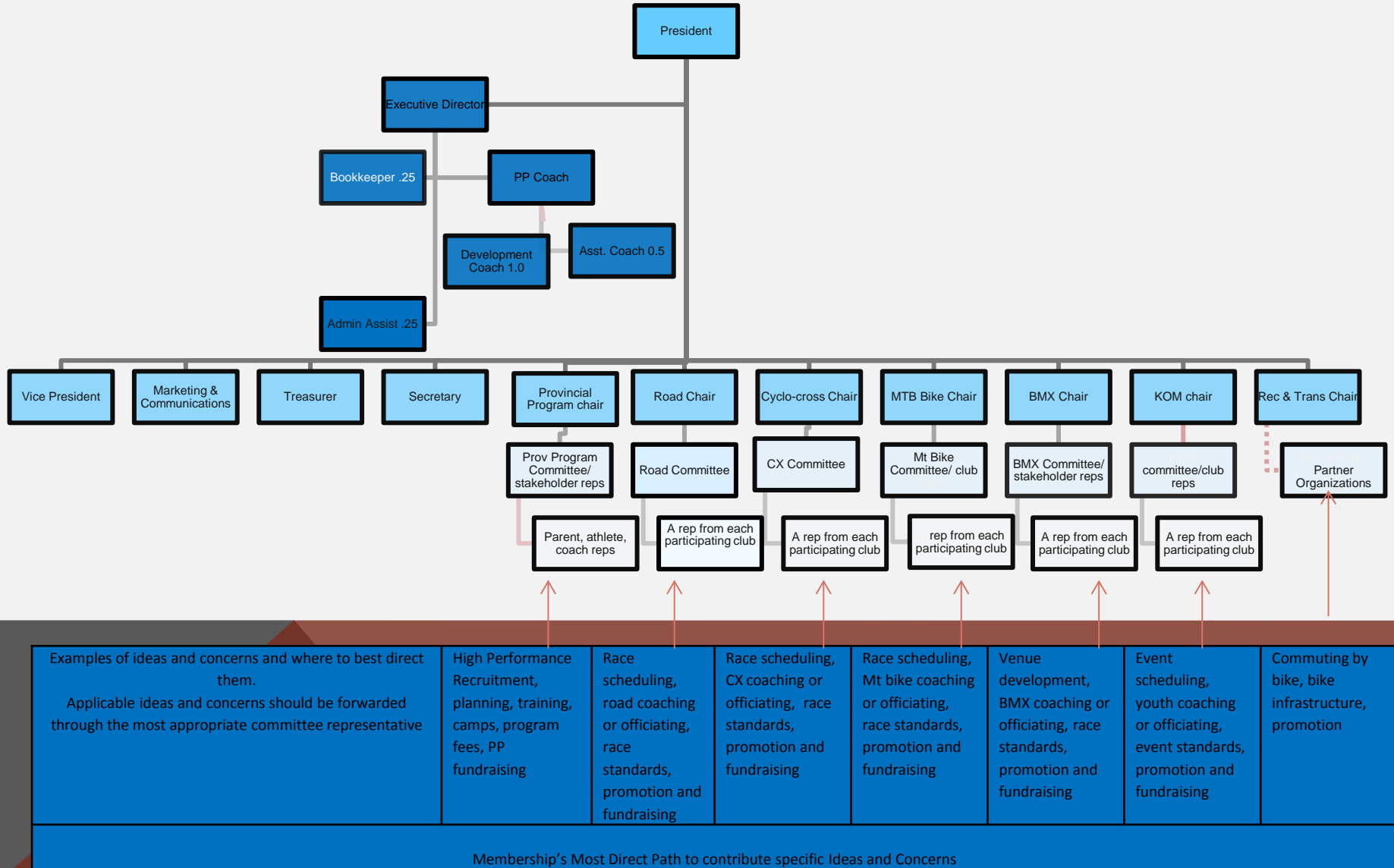


ORGANIZATIONAL CHART



<p>Examples of ideas and concerns and where to best direct them.</p> <p>Applicable ideas and concerns should be forwarded through the most appropriate committee representative</p>	<p>High Performance Recruitment, planning, training, camps, program fees, PP fundraising</p>	<p>Race scheduling, road coaching or officiating, race standards, promotion and fundraising</p>	<p>Race scheduling, CX coaching or officiating, race standards, promotion and fundraising</p>	<p>Race scheduling, Mt bike coaching or officiating, race standards, promotion and fundraising</p>	<p>Venue development, BMX coaching or officiating, race standards, promotion and fundraising</p>	<p>Event scheduling, youth coaching or officiating, event standards, promotion and fundraising</p>	<p>Commuting by bike, bike infrastructure, promotion</p>
---	--	---	---	--	--	--	--

Membership's Most Direct Path to contribute specific Ideas and Concerns