

# Stony Mountain CRITERIUM

Wednesday, June 8<sup>th</sup>, 2011  
7:00 – 9:00 PM

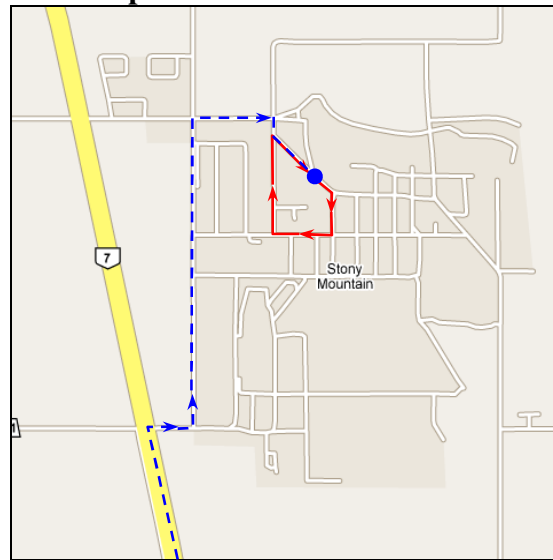
**Race Details:** You are invited to compete in the 8<sup>th</sup> Annual Stony Mountain Criterium located just 10 km North of Hwy. 7 and the Perimeter. See the maps below for directions. The Start/Finish and parking is on Dufferin Drive at Pike's Peak Toboggan Hill. Each lap is 1.5 km and the elevation change per lap is about 60 feet. Entry fee is \$20 on race day.

**Directions:** From the Perimeter, go North on Hwy. 7 for 10 km. Turn right at Stony Mountain then left at the Penitentiary entrance. Go north for 1.6 km. Turn right at Quarry Road (Route 74 North), turn left on Vincent then right on Dufferin.

### Directions:



### Course Map:



### Schedule:

Event	Duration	Reg. Opens	Reg. Closes	Start
Cat 5	20 min + 2 laps	6:00	6:30	7:00
Cat 4	30 min + 2 laps			7:30
Cat 1/2/3	40 min + 2 laps			8:15

Subject to change without notice based on participation.

**Parking:** Competitors and spectators arriving early can park at Pikes Peak at the start/finish. **DO NOT PARK ON THE COURSE.**

### Washrooms:

Scrumpy's Restaurant at Main and Memorial.  
Polly's Corner Race Trac Gas Station along Old Hwy #7.

